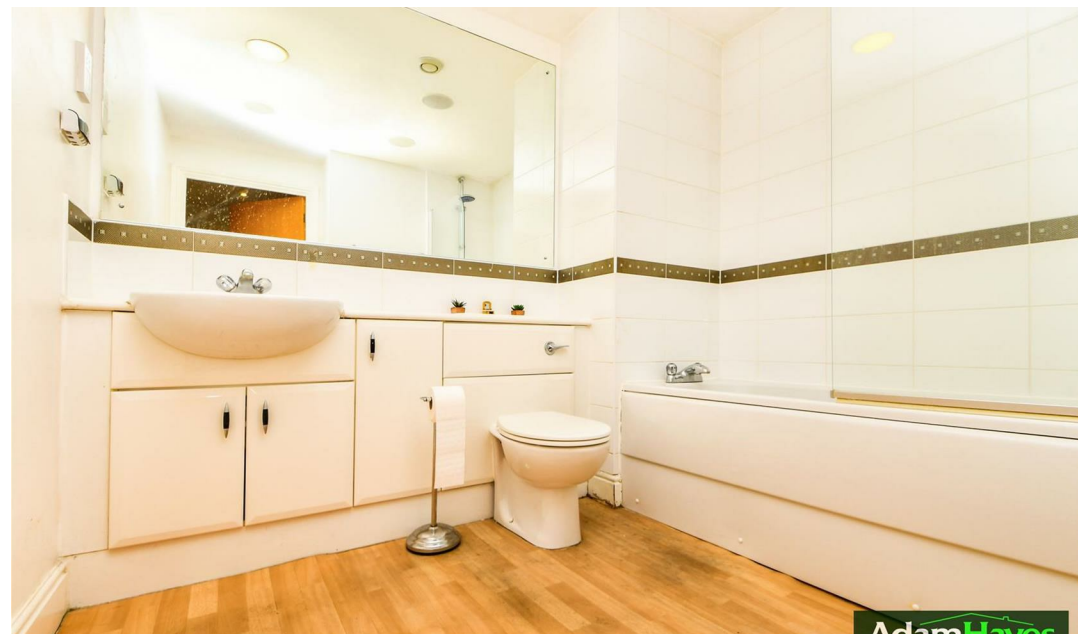




Kingsway, North Finchley High Road, N12

 2 Bedrooms  2 Bathrooms  1 Reception

Guide Price £350,000



Adam Hayes - North Finchley Office - Sales 365 Ballards Lane, North Finchley, London, N12 8LL
Tel: 020 8445 4008 Email: info@adam-hayes.co.uk Web: www.adam-hayes.co.uk

Kingsway, North Finchley High Road, N12

Guide Price £350,000

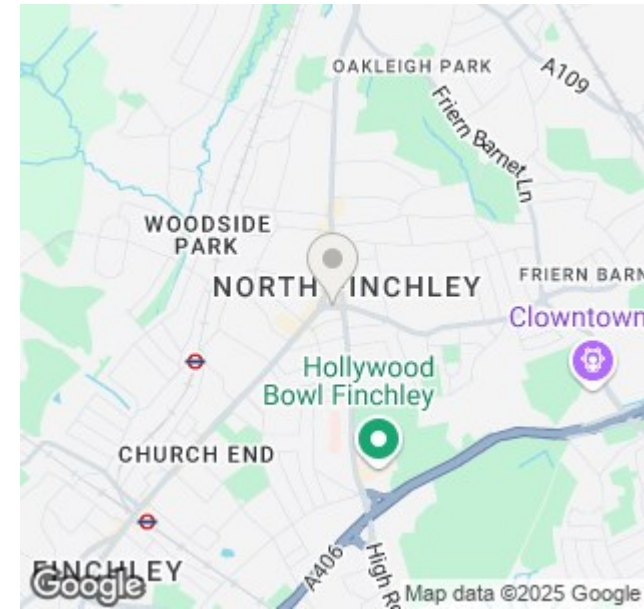
2 Bedrooms 2 Bathrooms 1 Receptions

Key Features

- Two Bedrooms
- Two Bathrooms
- Chain Free
- Underground Parking
- 24 Hour Concierge
- Private Balcony

Other Information

Tenure: Leasehold
Length of Lease: 104 years
Ground Rent: £100 pa
Service Charge: £5,749 pa
Council Tax Band: D

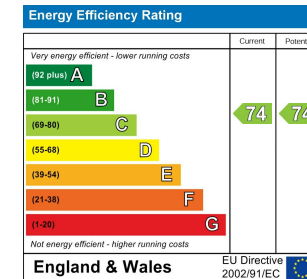


Nearest Stations

- Woodside Park Station 0.5miles
- West Finchley Station 0.6miles
- Finchley Central Station 1.0mile

Property Description

Located in the heart of Tally Ho, North Finchley, this well-presented ninth-floor luxury apartment offers two bedrooms and two bathrooms (including an en-suite shower in the primary). Set within a popular lift-serviced block, the property features a 24-hour concierge, a generously sized open plan kitchen/ lounge with a private balcony and underground parking for one car. Further benefits include the property being chain-free and within a short walking distance of local shops and amenities. To fully appreciate the size, location, and condition, an internal viewing is highly recommended through the vendor's sole agents, Adam Hayes Estate Agents.



Adam Hayes - North Finchley Office - Sales 365 Ballards Lane, North Finchley, London, N12 8LL

Tel: 020 8445 4008 Email: info@adam-hayes.co.uk Web: www.adam-hayes.co.uk



APPROX. GROSS INTERNAL FLOOR AREA 780.4 SQ FT / 72.5 SQ M
 Floorplans are for identification and guideline purposes only, not to scale.
 Compliant with RICS code of measuring practice.
 Floorplans supplied by www.draftingfloorplan.com

These particulars, whilst believed to be accurate, are set out as a general outline only for guidance and do not constitute any part of an offer or contract. Intending purchasers or prospective tenants should not rely on them as statements or representation of fact, but must satisfy themselves by inspection or otherwise as to their accuracy. We have not carried out a detailed survey, not tested the services, appliances and specific fittings. Room sizes should not be relied upon for carpets and furnishings. The measurements given are approximate. No person in this firm's employment has the authority to make or give any representation or warranty in respect of the property.